

OJIBWE FORESTS RALLY

22-24 AUGUST 2024



**SUPPLEMENTARY
REGULATIONS**

2024 NATIONAL CHAMPIONSHIP &
CENTRAL REGION CHAMPIONSHIP



Welcome to the 2024 Ojibwe Forests Rally, where the spirit of adventure and the thrill of competition converge in the heart of Minnesota's breathtaking wilderness. This year, we are excited to once again provide a platform for rally teams to showcase their skills amidst the challenging terrains and scenic landscapes that make this event truly unique. As you prepare to tackle the winding forest roads and exhilarating stages, we celebrate the dedication and passion that each team brings to this fierce competition.

The Ojibwe Forests Rally is not just a competition; it's a testament to the camaraderie and sportsmanship that define our sport. From the meticulous preparation of your vehicles to the strategic navigation of every twist and turn, your commitment is what makes this event a standout in the rally calendar. We are proud to host an event that not only tests the limits of speed and precision but also highlights the natural beauty of our surroundings, offering an unforgettable experience for competitors and spectators alike.

We extend our deepest gratitude to all participants, volunteers, sponsors, and fans who continue to support the Ojibwe Forests Rally year after year. Your unwavering enthusiasm and dedication are the driving forces behind the success of this event. Together, we create an environment where the rally spirit thrives, fostering a sense of community and shared excitement. Best of luck to all competitors—may your rally be safe, thrilling, and filled with memorable moments.

Scott Putnam
Chairman

Jonathan Atkins
Clerk of the Course

SANCTIONED BY:



ORGANIZED AND PROMOTED BY:
RALLY MINNESOTA LLC



1. Introduction

- 1.1. The 2024 Ojibwe Forests Rally will take place over 3 days. The rally will consist of testing, recce, Parc Expose, Super Special, and forest stages.
- Thursday, August 22, 2024.
 - Friday, August 23, 2024.
 - Saturday, August 24, 2024.

The final details of the route, as well as time controls, regrouping points, and route controls are described on the time schedule contained in the Route Book. The Route Book and the final itinerary will be issued digitally prior to the event and in print at the event.

The Ojibwe Forests Rally has been part of rally in the United States for over 40 years. The 2024 event is the sixth rally in the national American Rally Association championship.

- 1.2. The Ojibwe Forests Rally will be held under the General Competition Rules, Rally Technical Rules, and Rally Competition Rules of the American Rally Association (ARA). The 2024 American Rally Association Rules and Regulations can be found at <https://www.americanrallyassociation.org/rulesandbulletins>

Modifications, amendments and/or changes to these Supplementary Regulations will be announced only by numbered and dated Bulletins posted to the online notice board.

- 1.3. The Ojibwe Forest Rally stages are gravel with a sandy base. They are tighter forest roads lined by trees and can be easily rutted with rain or multiple passes of rally cars.
- 1.4. **Overall SS Distance & Total Distances.**

NATIONAL TOTALS OF THE RALLY				
	SS	TRANSIT	TOTAL	%
Thursday (Section 1)	0.54	0	0.54	0.14%
FRIDAY (Sections 2, 3)	69.72	152.10	221.82	57.5%
SATURDAY (Sections 4, 5, 6)	65.53	98.00	163.53	42.4%
Total -- 18 SS	135.25	250.10	385.35	100%

REGIONAL TOTALS OF THE RALLY				
	SS	TRANSIT	TOTAL	%
Thursday (Section 1)	0.54	0	0.54	0.15%
FRIDAY (Sections 2, 3)	69.72	152.10	221.82	63.1%
SATURDAY (Sections 4, 5)	57.64	71.36	129.00	36.7%
Total -- 17 SS	127.36	223.46	350.82	100%

2. Organization and Description

2.1. Organized by the Ojibwe Forests Rally Committee and Rally Minnesota, LLC

2.2. Committee

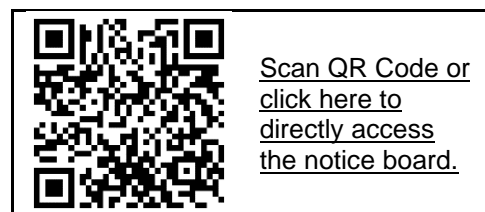
Role	Name	Contact Phone	Email
Chairman	Scott Putnam	612-309-5938	scott@rallyminnesota.com
Clerk of the Course	Jonathan Atkins	701-367-9867	clerkofcourse@rallyminnesota.com
Asst. Clerk of the Course	Greg Messler	612-282-1261	greg.messler@gmail.com
Chief of EMS	Nate Koppenhaver	701-541-7348	nkoppenhaver@rrrdc.com
Chief of Controls	Eric Linner	612-382-5641	controls@rallyminnesota.com
	Tyler Linner	651-472-1541	controls@rallyminnesota.com
Chief of Scrutineering	Greg Lahlum	701-793-6919	greg.lahlum@gmail.com
Registrar	Nicky Schmidt	612-801-3332	registrar@rallyminnesota.com
Chief of Communications	Eli Koppenhaver	701-354-5181	eli.koppenhaver@gmail.com
Chief of Service	David Zemaitis	239-851-1900	dazemaitis@gmail.com

2.3. ARA Officials

Role	Name	Contact Phone	Email
ARA Steward	Alan Perry	206-499-5501	alanp@snowmoose.com
Event Steward	Greg Healey	845-594-1806	gphcomp@nycap.rr.com
Competition Director	Preston Osborn	720-646-4331	preston@ara-rally.com
Technical Director	Doug Nagy	949-637-7856	doug@ara-rally.com
Media Officer	Marni Nagy	949-436-2060	https://www.americanrallyassociation.org/media

2.4. Notice Board

The Official Notice Board is accessed with the **Sportity App** which available for both Apple and Android devices, or at <https://webapp.sportity.com/channel/OFR2024>. The password for this event is OFR2024. All official documents, Bulletins, start orders, provisional results, inquiries, RAR's, team updates, withdrawals, and responses will use the Sportity App.



3. Schedule

Time (Central)	Description	Location
Sunday, July 7, 2024		
	Supplemental Regulations Published	Sportity
Tuesday, July 9, 2024		
1200	Entry opens	http://enterrally.com/
Monday, July 29, 2024		
2359	Normal Entry Ends	http://enterrally.com/
Tuesday July 30, 2024		
0000	Late Entry Opens	http://enterrally.com/
Wednesday, August 7, 2024 (Approximate)		
TBD	Advanced Competitor Packet sent	Sportity
Sunday, August 18, 2024		
2359	Competitor Entry Closes	http://enterrally.com/
Monday, August 19, 2024		
	Entry List & Provisional Start List	Sportity
1900	Novice Competitor Virtual Meeting	Online Teams Meeting
Wednesday, August 21, 2024		
0800-1600	Testing Stages	
1700-2100	Team Check-In	Soo Pass Ranch
1700-2000	Scrutineering	Soo Pass Ranch
1700-2000	Super Special Recce	Soo Pass Ranch
Thursday, August 22, 2024		Sunrise 0627 - Sunset 2013
0600-0900	Team Check-In	Soo Pass Ranch
0700-1700	Recce	Forest Stages
0900-1600	Scrutineering	Soo Pass Ranch
1800	Steward Meeting	Soo Pass Ranch
1830	Start List Posted	Sportity
1830	Seeded Draw	TBD
1800-2200	Rally Kick-Off Party	Soo Pass Ranch
1800-2000	Parc expose	Soo Pass Ranch
1900-2000	Super Special	Soo Pass Ranch
Friday, August 23, 2024		Sunrise 0629 - Sunset 2012
0800	Service Opens	Pioneer Farm Service Area
0900-1100	Registration/Check-In (By Appt. Only)	Pioneer Farm Service Area
1300	First Car Out	Pioneer Farm Service Area
1731	Service 1	Pioneer Farm Service Area
2130	End of Day 1	Pioneer Farm Service Area
Saturday, August 24, 2024		Sunrise 0630 - Sunset 2010
730	Service Opens	Pioneer Farm Service Area
By Appt. Ony	Tech Inspection	Pioneer Farm Service Area
1000	First Car Out	Pioneer Farm Service Area
1240	Service 2	Pioneer Farm Service Area
1730	Regional Podium	Pioneer Farm Service Area
1900	National Podium	Pioneer Farm Service Area

4. Entries

- 4.1. Entry and payment must be paid online at <http://enterrally.com/>. ARA will send an email blast to ARA license holders announcing the opening of online entries. Contact ara@ara-rally.com with issues with the online entry process.

Rally participants must have an ARA license (competitors, service crew, and media) available on the ARA website.

- 4.2. The Ojibwe Forests Rally is limited to 75 cars. If more than 75 entries are received a waitlist will be used with priority based on time and date of entry and payment received. Initially, 70 entries will be accepted with the last five spots held until August 19, 2024, for the top five national teams in the 2024 ARA Championship. Wait listed entries not accepted will receive a full refund.

The first 10 paid National and Regional teams competing in a Subaru vehicle are eligible for discounts.

Discount codes are:

24OFRNat

24OFRRReg

4.3. Entry Fee Schedule

2024 Ojibwe Forests Rally	Regular Entry	Late Entry
	July 9 - July 29 @ 2359	July 30 – August 18 @ 2359
National	\$ 1,400	\$ 1,500
Regional	\$ 975	\$ 1,050
Extra Service Space	\$ 200	

- 4.4. Entry fee includes recce participation, one service route book, single service spot and competitor route book. All competitors will receive printed and bound copies of all information necessary to complete the rally or follow the service route successfully. Printed materials can be picked up at event check in. All race documents will also be provided as a digital download once finalized.
- 4.5. Competitors needing to withdraw from the rally must complete the Entry Update/Withdrawal Form available on the Sportity App in the Registrar folder.
- 4.6. An entry may be withdrawn in accordance with GCR 4.9.
- Prior to 23:59 on 8/4/2024 – full refund
 - After 23:59 on 8/4/2024 and until 23:59 on 8/18/2024 – \$250 held by the event and remaining balance refunded
 - After 23:59 on 8/18/2024 – no refund.
 - If the event is cancelled a full refund will be issued.

5. Insurance

- 5.1. Third party liability insurance covering bodily injury and property damage, effective during the competition, will be provided by a policy secured by USAC and displayed on the Official Notice Board.
- 5.2. Competitors, service crew members and all event participants including officials, marshals, staff, stewards and all other volunteers who have obtained an ARA license, signed an ARA waiver and have been issued and are in possession of an event wristband confirming the signature of the waiver will be covered by a secondary USAC participant accident insurance policy which covers excess medical expenses to their primary medical insurance provider.

6. Advertising and Identification

- 6.1. The Ojibwe Forests Rally may use the event sponsor advertising space allowed by ARA rules. If this decal is provided during check-in it must be installed prior to scrutineering. Competitors choosing not to

install the event sponsor decal must pay the event promoter (Rally Minnesota LLC) the \$1,000 fee. The fee must be paid before the vehicle will pass scrutineering.

<http://ojibwe-forests-rally.square.site/>

7. Fuel

- 7.1. VP Fuel will be available for pre-purchase and delivered to the event. Deadline to order VP Fuel is August 9, 2024. Details are available at the QR Code or link.
- 7.2. Pick up will be at the scrutineering location at Soo Pass Ranch. The Ojibwe Forests Rally and Rally Minnesota LLC is not responsible for fuel not picked up by the end of the day Thursday, August 22, 2024.



8. Reconnaissance (Recce)

- 8.1. Drivers and co-drivers must check in at the scheduled registration/check-in location prior to participating in recce.

8.2. Recce Details

- 8.2.1. Recce will be open. Competitors may make as many passes as the time and recce speed limit allows.
 - 8.2.1.1. Recce is open from 5pm to 8pm on Wednesday August 21, 2024 for the Super Special at Soo Pass Ranch.
 - 8.2.1.2. Recce is open from 7am until 5pm, Thursday, August 22, 2024 for recce on all stages.
- 8.2.2. Speed limit during recce is 30mph on stage roads. Otherwise use posted speed limit on transits. Speed limits will be enforced in accordance with ARA RCR 1.2.1.
- 8.2.3. Recce roads are open to the public. Teams must drive responsibly and stay on the proper side of the road.
- 8.2.4. Street vehicles must be used during recce. No lettering, advertising or livery can be on the vehicles. No prepared rally cars are allowed. The Clerk of the Course will be the final determinant of any violations.
- 8.2.5. As the Ojibwe Forests Rally has done for last few years an advance digital packet will be sent to all registered teams prior to the event, on or around 8/7/2024.

9. Registration/Check-in

- 9.1. Teams attending the event must check in during the times available in the event schedule. If all documents have been provided to ARA and there are no administrative issues, the team packet can be picked up by a single team representative.
- 9.2. Check-in will be at the Soo Pass Ranch. Waivers must be completed online as part of the licensing process. *The pin at the google link to the right is on the building used for check in.*

Soo Pass Ranch
25526 County Highway 22
Detroit Lakes, MN 56501



- 9.3. All participants (competitors and crew) must have completed the licensing by end of day 8/18/2024.

10. Scrutineering



Scan QR Code or
click here for
Scrutineering
Location on Google
Maps.



Scan QR Code or
click here to
schedule
Scrutineering

- 10.1. Scrutineering will be held at the Soo Pass Ranch. Scrutineering will be in the large white shed located in the concert bowl. *The pin at the link to the right is located on the building where scrutineering will take place.* Parking area for trailers will be sent out in a bulletin once finalized with Soo Pass Ranch.
- 10.2. Scrutineering times will be scheduled by the Competitor. Pay attention to the date and time you select, and try to keep Wednesday open for teams without crew. Use this link: <https://appt.link/OFR-Scrutineering24>
- 10.3. If you arrive late you may lose your spot in the schedule and will be slotted in at the next available time. Suggested to arrive at least half an hour prior to the scheduled time in case scrutineering is ahead of schedule.
- 10.4. Per ARA rules all decals and identification must be on the car prior to arriving at scrutineering. ARA door panels, windshield banners and number packages can be purchased online in advance.
- 10.5. Competition vehicles must be clean (washed) inside and out when presented for scrutineering. Vehicles not adequately clean will be refused inspection until they are clean.

11. Service

- 11.1.1. The 2024 Ojibwe Forests Rally will have one service location.
There is no service location at Soo Pass and the space available is for loading, unloading, and parking trailers.
- 11.1.2. Service vehicles and teams are not allowed to stay at Soo Pass Ranch Thursday night.
- 11.1.3. Friday and Saturday Service
Pioneer Farms
16879 N Entrance Dr
Shevlin, MN 56676



Scan QR Code or
click here for
Pioneer Farms
Service Location on
Google Maps.

- 11.1.4. Service spaces will be assigned by the Chief of Service. For any special needs regarding service and placement contact the Chief of Service.
- 11.2. Service will open:
- | | |
|---------------|-----------------|
| <u>Friday</u> | <u>Saturday</u> |
| 0800 | 0730 |
- 11.3. The standard Service space will be 20 ft. X 60 ft., with entrance only via one 20 ft. side. If you need more room, you must register for additional space(s) of 20 ft. X 60 ft as needed. There will be a \$200 charge for each additional space needed. You must be able to place your vehicle(s), trailer(s) and service equipment all within the space(s) assigned to you. There will be no space available to park your trailer away from your service area.
- 11.4. No alcohol use will be permitted in the service area. This includes everyone in the Service area, no matter what their connection to the rally - all teams, crews, guests, and volunteers.
- 11.5. Vehicles not officially registered with a team as a service vehicle will be not allowed in the service area. All officially registered vehicles must display registration cards with prominent car number on their dash at all times. Vehicles without cards will be considered spectator vehicles and not permitted into the service area for any reason. Limited parking will be available outside the service area.
- 11.6. Tarps/spill cloths must be placed under cars for all servicing operations. Service areas not cleaned will be subject to \$150 fine.
- 11.7. No on-ground grills, or disposing of any charcoal, briquettes, etc., are permitted. Any non-gas grill ignition sources must be completely COLD or removed in a fire-proof container.
- 11.8. **Service crews must notify the Chief of Service when they leave the service area to retrieve a car.** *If the Chief of Service cannot be located in a timely manner, the Clerk of the Course can be notified in the scoring trailer.*
- 11.9. Purchasing fuel from commercial gas stations located along transit sections of the route is permitted. All work involved in adding such fluids must be performed by the driver and/or co-driver if outside of the service area. No added allowance is included in transit times for such fueling.
- 11.10. Follow the direction of the Rally volunteer staff when parking your service vehicle at all service locations. Teams will have an assigned location based on running order and space requirements.
- 11.11. Once service areas are set up, they can remain overnight. This includes service vehicles. Overnight camping Friday night to Saturday is permitted at Pioneer Farms for all teams.

12. Testing Stage

- 12.1. A testing stage will be provided on Wednesday, August 17 from 0800 – 1600.
- Testing will be available in two hour time blocks.
 - Each block will have a maximum of six (6) teams at \$300 each.
- 12.2. Registration and payment can be made at the ARA registration site when you sign up for the event.
- 12.3. Practice or testing on any public road in the Paul Bunyan, Two Inlets and White Earth State Forests is forbidden, without consent of the Clerk of the Course, 90 days prior and 30 days following the Ojibwe Forest Rally.
- Teams found in violation will be barred from starting or excluded from finishing the Ojibwe Forests Rally. Their entry fee will not be refunded. The Clerk of the Course will be the sole arbiter of any potential violation.
- 12.4. Any practice or testing on a private road or facility within the areas listed above during the dates stated in section 12.3 must be conducted with the written permission of the property owner. The Clerk of the Course must be given at least 48 hours advance notice of any such arrangements, including a copy of the permission and contact information for the property owner.

12.5. Private testing sessions can be arranged by contacting the Clerk of the Course.

13. Features of the Rally

13.1. Parc Expose

13.1.1. Parc Expose will be held Thursday from 1800 to 1900 at Soo Pass Ranch.

13.1.1.1. Cars need to be at Parc Expose by 1800

13.1.1.2. Driver and Co-Driver need to be at Parc Expose by 1830.

13.1.2. RCR 4.10 will apply to the Parc Expose.

13.2. Super Special

13.2.1. A super special will be held Thursday evening at Soo Pass Ranch immediately following the Parc Expose and starts at 1900. The super special will be run in reverse order based on the official start order posted on Sportity.

13.2.2. Once teams have completed the Super Special, they are free to go.

13.3. Start of the Rally

13.3.1. Thursday competition will begin at Soo Pass Ranch in Detroit Lakes.

13.3.2. Friday and Saturday competition will start from the service location at Pioneer Farms.

13.3.3. The official start order will be posted on Sportity.

13.4. Running of the Rally

13.4.1. All control operations will be conducted per section 4 of the current ARA Rally Competition Rules and employ RallySafe consoles and tablets. Informational and provisional results will be posted on Sportity.

13.4.2. Official time is Central Daylight Time (UTC -5) as verified by RallySafe.

13.4.3. The running of Otterkill 3 (SS18) will be the Power Stage.

13.4.4. The power stage will be run at a 2 minute interval for all National competitors.

13.4.5. There will be an optional refuel zone designated on the transit between SS2 and SS3 and again between SS6 and SS7. The optional refuel zone will be clearly identified in the route book and the area will be clearly identified with fuel zone begin and end signs. The service route book will include the route service crews must follow between the service area and the optional refuel zone.

13.4.6. For National early check in is allowed for control TC8A of Leg One, and TC17A of Leg Two.

13.4.7. For Regional early check in is allowed for control TC8A of Leg One, and TC16A of Leg Two.

13.5. Rejoining the event after retirement (ARA RCR 6.3)

13.5.1. 13.4.1. Competitors who have missed one or more controls and are Restarting After Retirement or wish to rejoin as a Non-Competitive Entry, are required to complete and submit an inquiry on Sportity before they restart. The Clerk of the Course and Chief Scrutineer will verify that the team meets the safety requirements and has any required tracking or monitoring equipment before issuing a timecard for the Rally Re-Entry.

13.6. Finish of the Rally

13.6.1. Final Checks and Impound will be at Pioneer Farms.

13.6.2. Final Results will be posted on the Sportity Online Notice Board.

13.6.3. The official finish will be at Pioneer Farms.

13.6.4. Regional rallies awards points to Overall, Limited 4WD, NA4WD, Open 2WD and Limited 2WD. The Ojibwe Forests Rally Officials will award trophies in all classes with more than two finishers.

13.6.5. A volunteer banquet will be held on Saturday evening at Pioneer Farms. All teams are welcome to attend and mingle with our volunteers.

13.7. Soo Pass Ranch will be used for many activities Wednesday and Thursday of event week. Please follow signage, volunteers and directions.

14. Sanction Exemptions

14.1. None.

Appendix 1: National Schedule

Competition Itinerary

50 cars

START Leg 1		Thursday, August 22, 2024					
TC	LOCATION	SS DIST	TRANSIT DIST	TOTAL DIST	LATENESS TIME	TRANSIT TIME	FIRST CAR DUE
0	MTC 1 Soo Pass Ranch						19:00
SS #1	Soo Pass	0.54			0:01		19:03
1A	MTC 2 Soo Pass Ranch						19:04
Leg 1 Totals		0.54	0.00	0.54			

Section 1

Competition Itinerary

50 cars

START Leg 2		Friday, August 23, 2024					
TC	LOCATION	SS DIST	TRANSIT DIST	TOTAL DIST	LATENESS TIME	TRANSIT TIME	FIRST CAR DUE
1B	MTC 3 Pioneer Farm						13:00
	Distance to next refuel	(10.68)	(31.55)	(42.23)			
2	Transit to SS #2		26.46			0:38	13:38
SS #2	Thorpe Tower	10.68			0:17		13:41
	Transit to Fuel Depot		5.09	15.77		0:19	14:17
RZ 1	County 91 Refuel (time added to next transit)					0:05	
	Distance to next refuel	(24.18)	(44.50)	(68.68)			
3	Transit to SS #3		3.53	19.30		0:05	14:27
SS #3	Refuge	5.61			0:08		14:30
4	Transit to SS #4		4.06	9.67		0:13	14:51
SS #4	Kabekona	11.08			0:18		14:54
5	Transit to SS #5		6.19	17.27		0:20	15:32
SS #5	Steamboat	7.49			0:13		15:35
	Transit to Service		30.72	38.21		0:43	16:31
5A	RGC 1 In						16:31
5B	RGC 1 Out					0:15	16:46
5C	Service Pioneer Farm					0:45	17:31
RZ 2	Service Refuel (time added to next transit)					0:05	
	Distance to next refuel	(10.68)	(31.55)	(42.23)			
6	Transit to SS #6		26.46			0:38	18:14
SS #6	Thorpe Tower 2	10.68			0:17		18:17
	Transit to Fuel Depot		5.09	15.77		0:19	18:53
RZ 3	County 91 Refuel (time added to next transit)					0:05	
	Distance to next refuel	(24.18)	(44.50)	(68.68)			
7	Transit to SS #7		3.53	19.30		0:05	19:03
SS #7	Refuge 2	5.61			0:08		19:06
8	Transit to SS #8		4.06	9.67		0:13	19:27
SS #8	Kabekona 2	11.08			0:18		19:30
9	Transit to SS #9		6.19	17.27		0:20	20:08
SS #9	Steamboat 2	7.49			0:13		20:11
	Transit to Pioneer Farm		30.72	38.21		0:43	21:07
9A	MTC 4 Pioneer Farm						21:07
Leg 2 Totals		69.72	152.10	221.82			

Section 2

Section 3

National Competition Itinerary

45 cars

START Leg 3

Saturday, August 24, 2024

TC	LOCATION	SS DIST	TRANSIT DIST	TOTAL DIST	LATENESS TIME	TRANSIT TIME	FIRST CAR DUE
9B	MTC 5						10:00
	Distance to next refuel	(33.63)	(35.68)	(69.31)			
10	Transit to SS #10		11.37			0.22	10:22
SS #10	Otterkill	7.89			0:14		10:25
11	Transit to SS #11		7.40	15.29		0.26	11:05
SS #10	Kanten Trail	8.34			0:14		11:08
12	Transit to SS #12		0.47	8.81		0.09	11:31
SS #12	Height o' Land	8.32			0:14		11:34
13	Transit to SS #13		12.71	21.03		0.26	12:14
SS #13	Anchor Mattson	9.08			0:11		12:17
	Transit to Pioneer Farm		3.73	12.81		0.14	12:42
13A	RGC 2 Pioneer Farm In						12:42
13B	RGC 2 Pioneer Farm Out					0.15	12:57
13C	Service Pioneer Farm					0.30	13:27
RZ 4	Service Refuel (time added to next transit)					0.05	
	Distance to next refuel	(33.63)	(35.68)	(69.31)			
14	Transit to SS #14		11.37			0.22	13:54
SS #14	Otterkill 2	7.89			0:14		13:57
15	Transit to SS #15		7.40	15.29		0.26	14:37
SS #15	Kanten Trail 2	8.34			0:14		14:40
16	Transit to SS #16		0.47	8.81		0.09	15:03
SS #16	Height o' Land 2	8.32			0:14		15:06
17	Transit to SS #17		12.71	21.03		0.26	15:46
SS #17	Anchor Mattson 2	9.08			0:11		15:49
	Transit to Pioneer Farm		3.73	12.81		0.14	16:14
17A	RGC 3 Pioneer Farm In						16:14
17B	RGC 3 Pioneer Farm Out					0.15	16:29
17C	Service 2 Pioneer Farm					0.30	16:59
RZ 5	Service Refuel (time added to next transit)					0.05	
	Distance to next refuel	(7.89)	(26.64)	(34.53)			
18	Transit to SS #18		11.37			0.22	17:26
SS #18	Otterkill 3	7.89			0:14		17:29
	Transit to Pioneer Farm		15.27	23.16		0.26	18:09
18A	MTC 6 Pioneer Farm						18:09

Leg 3 Totals	75.15	98.00	173.15
---------------------	--------------	--------------	---------------

Section 4

Section 5

Section 6

Appendix 2: Regional Schedule

Competition Itinerary

50 cars

START Leg 1		Thursday, August 22, 2024					
TC	LOCATION	SS DIST	TRANSIT DIST	TOTAL DIST	LATENESS TIME	TRANSIT TIME	FIRST CAR DUE
0	MTC 1 Soo Pass Ranch						19:00
SS #1	Soo Pass	0.54			0:01		19:03
1A	MTC 2 Soo Pass Ranch						19:04
Leg 1 Totals		0.54	0.00	0.54			

Section 1

Competition Itinerary

50 cars

START Leg 2		Friday, August 23, 2024					
TC	LOCATION	SS DIST	TRANSIT DIST	TOTAL DIST	LATENESS TIME	TRANSIT TIME	FIRST CAR DUE
1B	MTC 3 Pioneer Farm						13:00
	Distance to next refuel	(10.68)	(31.55)	(42.23)			
2	Transit to SS #2		26.46			0:38	13:38
SS #2	Thorpe Tower	10.68			0:17		13:41
	Transit to Fuel Depot		5.09	15.77		0:19	14:17
RZ 1	County 91 Refuel (time added to next transit)					0:05	
	Distance to next refuel	(24.18)	(44.50)	(68.68)			
3	Transit to SS #3		3.53	19.30		0:05	14:27
SS #3	Refuge	5.61			0:08		14:30
4	Transit to SS #4		4.06	9.67		0:13	14:51
SS #4	Kabekona	11.08			0:18		14:54
5	Transit to SS #5		6.19	17.27		0:20	15:32
SS #5	Steamboat	7.49			0:13		15:35
	Transit to Service		30.72	38.21		0:43	16:31
5A	RGC 1 In						16:31
5B	RGC 1 Out					0:15	16:46
5C	Service Pioneer Farm					0:45	17:31
RZ 2	Service Refuel (time added to next transit)					0:05	
	Distance to next refuel	(10.68)	(31.55)	(42.23)			
6	Transit to SS #6		26.46			0:38	18:14
SS #6	Thorpe Tower 2	10.68			0:17		18:17
	Transit to Fuel Depot		5.09	15.77		0:19	18:53
RZ 3	County 91 Refuel (time added to next transit)					0:05	
	Distance to next refuel	(24.18)	(44.50)	(68.68)			
7	Transit to SS #7		3.53	19.30		0:05	19:03
SS #7	Refuge 2	5.61			0:08		19:06
8	Transit to SS #8		4.06	9.67		0:13	19:27
SS #8	Kabekona 2	11.08			0:18		19:30
9	Transit to SS #9		6.19	17.27		0:20	20:08
SS #9	Steamboat 2	7.49			0:13		20:11
	Transit to Pioneer Farm		30.72	38.21		0:43	21:07
9A	MTC 4 Pioneer Farm						21:07
Leg 2 Totals		69.72	152.10	221.82			

Section 2

Section 3

Regional Competition Itinerary

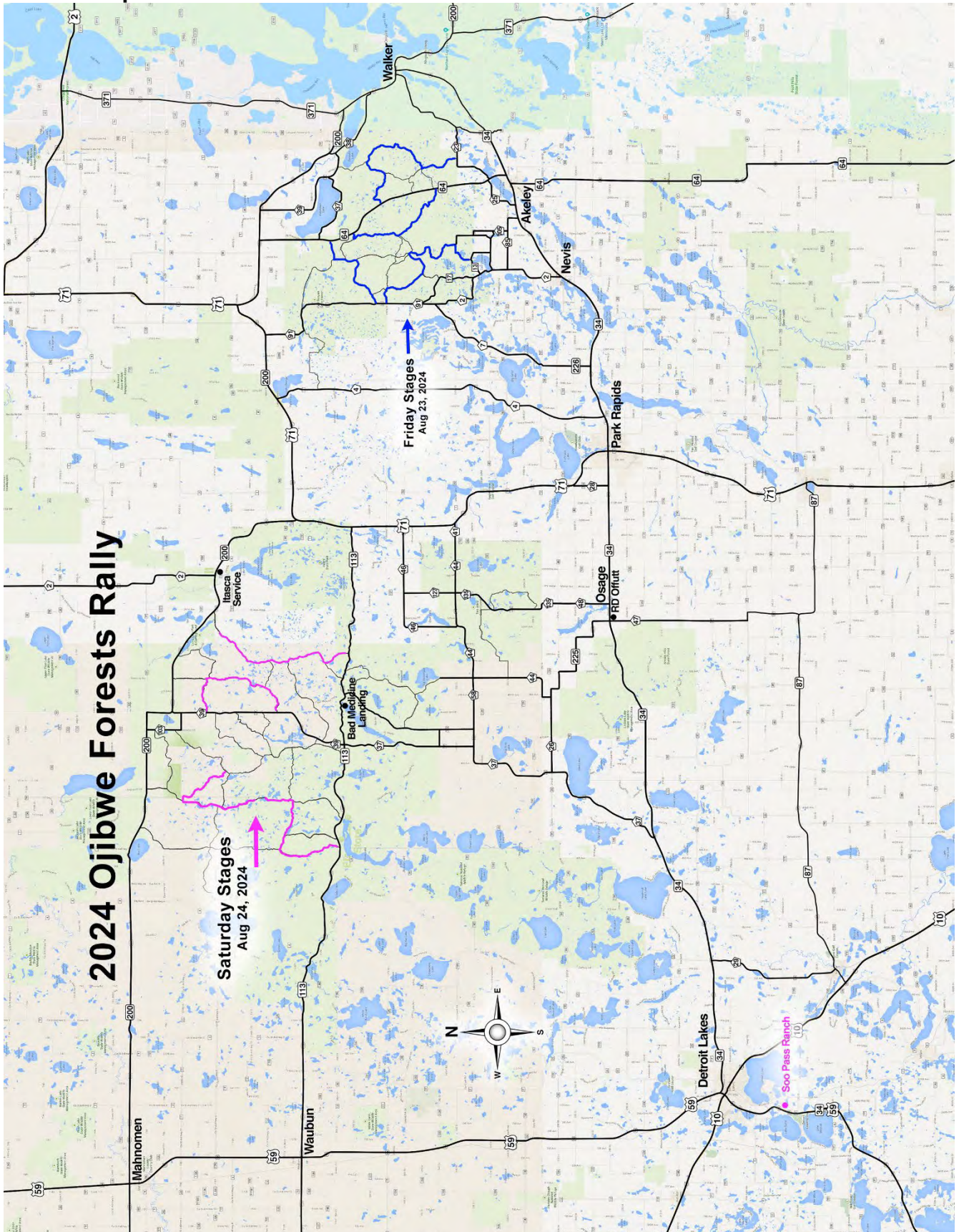
45 cars

START Leg 3		Saturday, August 24, 2024					
TC	LOCATION	SS DIST	TRANSIT DIST	TOTAL DIST	LATENESS TIME	TRANSIT TIME	FIRST CAR DUE
9B	MTC 5						10:00
	Distance to next refuel	(33.63)	(35.68)	(69.31)			
10	Transit to SS #10		11.37			0:22	10:22
SS #10	Otterkill	7.89				0:14	10:25
11	Transit to SS #11		7.40	15.29		0:26	11:05
SS #10	Kanten Trail	8.34				0:14	11:08
12	Transit to SS #12		0.47	8.81		0:09	11:31
SS #12	Height o' Land	8.32				0:14	11:34
13	Transit to SS #13		12.71	21.03		0:26	12:14
SS #13	Anchor Mattson	9.08				0:11	12:17
	Transit to Pioneer Farm		3.73	12.81		0:14	12:42
13A	RGC 2 Pioneer Farm In						12:42
13B	RGC 2 Pioneer Farm Out					0:15	12:57
13C	Service Pioneer Farm					0:30	13:27
RZ 4	Service Refuel (time added to next transit)					0:05	
	Distance to next refuel	(33.63)	(35.68)	(69.31)			
14	Transit to SS #14		11.37			0:22	13:54
SS #14	Otterkill 2	7.89				0:14	13:57
15	Transit to SS #15		7.40	15.29		0:26	14:37
SS #15	Kanten Trail 2	8.34				0:14	14:40
16	Transit to SS #16		0.47	8.81		0:09	15:03
SS #16	Height o' Land 2	8.32				0:14	15:06
17	Transit to SS #17		12.71	21.03		0:26	15:46
SS #17	Anchor Mattson 2	9.08				0:11	15:49
	Transit to Pioneer Farm		3.73	12.81		0:14	16:14
17A	MTC 6 Pioneer Farm						16:14
Leg 3 Totals		67.26	71.36	138.62			

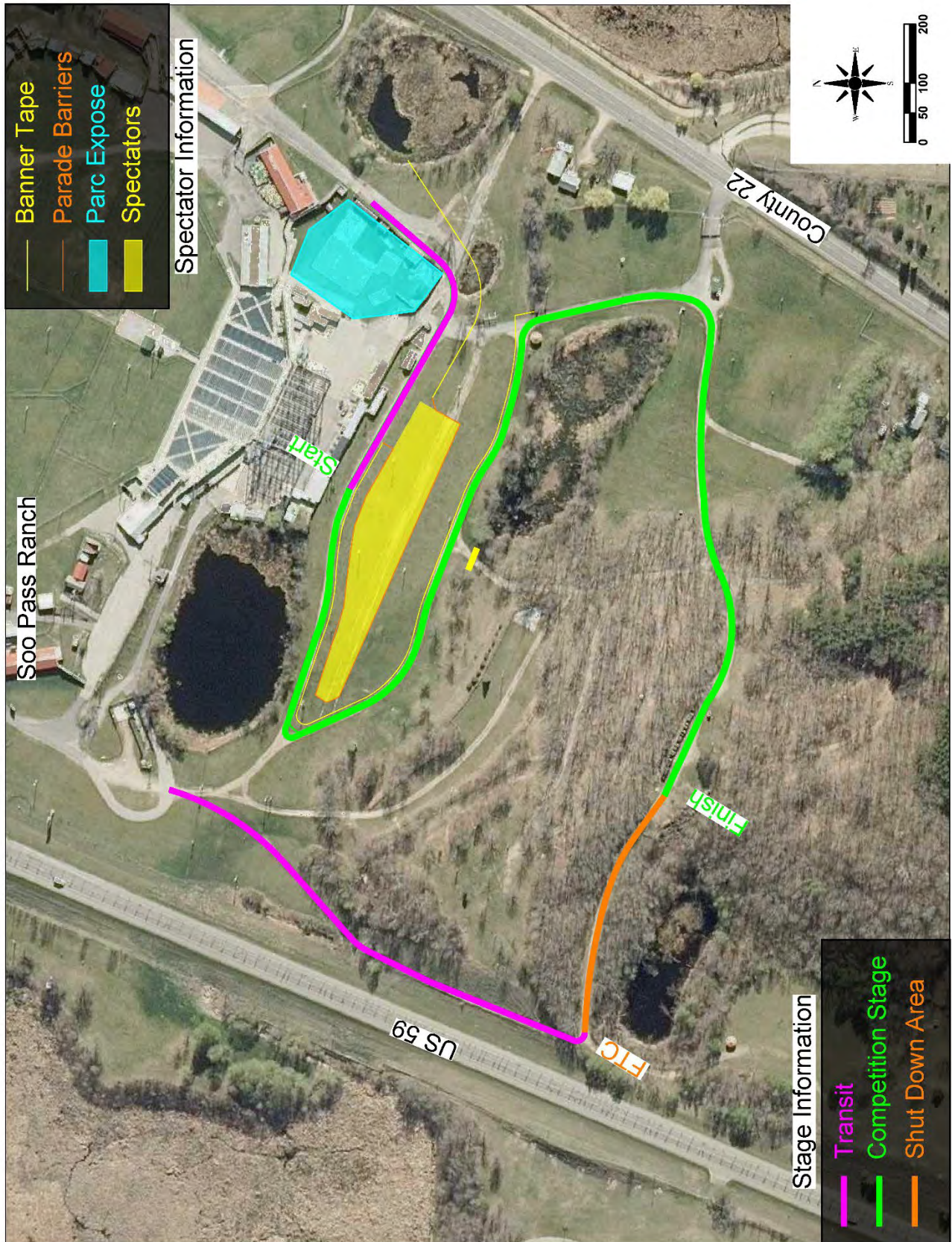
Section 4

Section 5

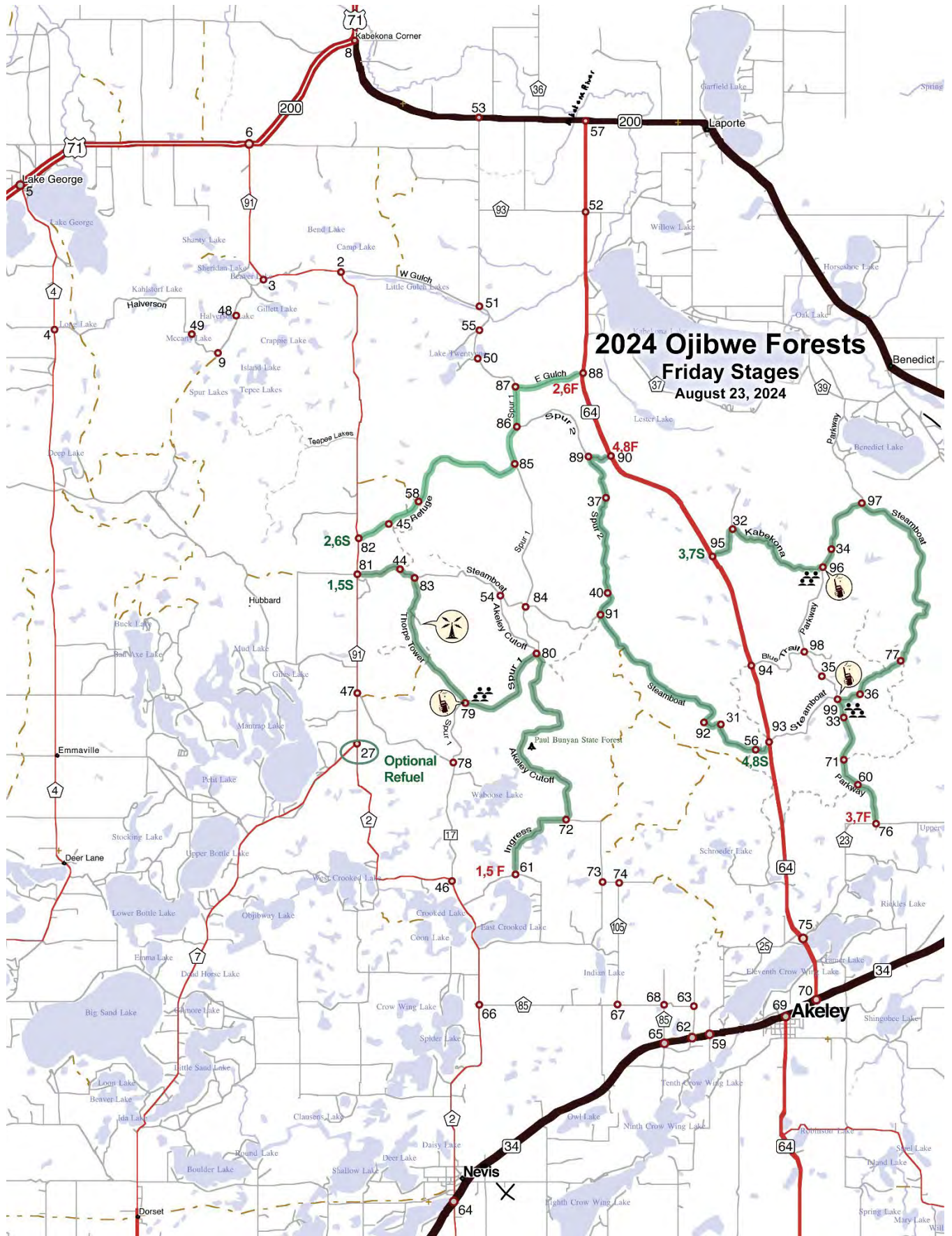
Appendix 3: Maps Area Map



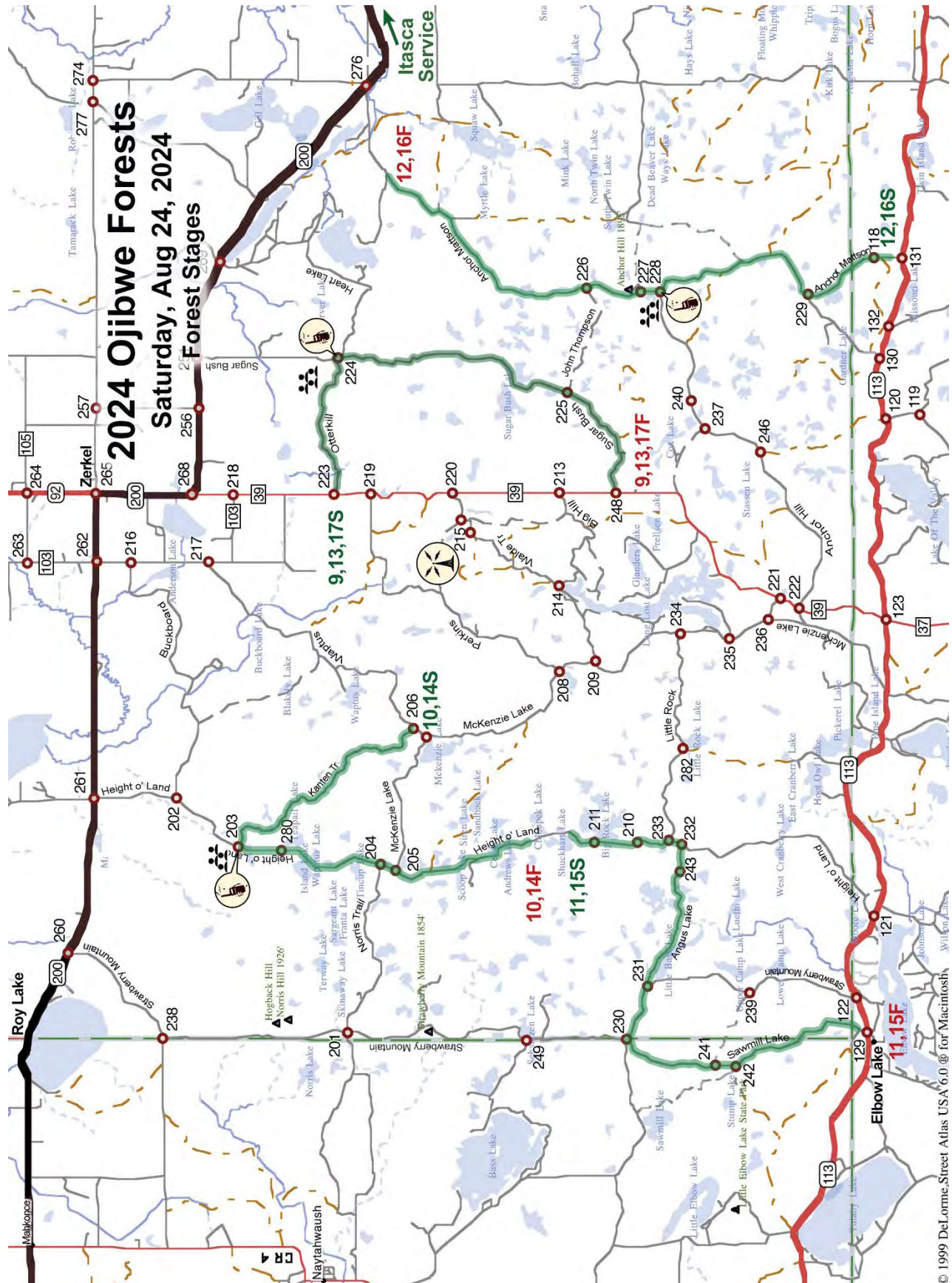
Thursday Night Super Special



Friday Stages



Saturday Stages



© 1999 DeLorme Street Atlas USA 6.0 for Macintosh