



2024 Supplementary Regulations

ARA West Doubleheader Regional Events

&

California Rally Series (CRS)
Friday Coefficient 2 Event
Saturday CRS Coefficient 3 Event

Prescott, Arizona
Chino Valley, Arizona
September 20th- 21st

Part of:

2024 ARA West Regional Championship



2024 California Rally Series Championship



Table of Contents

| | |
|---|----|
| 1. Introduction | 3 |
| 2. Organization | 3 |
| 3. Schedule (All times are Mountain Standard Time) | 4 |
| 4. Entries | 5 |
| 5. Insurance | 6 |
| 6. Event Sponsor Advertising | 6 |
| 7. Fuel | 6 |
| 8. Reconnaissance | 7 |
| 9. Competitor and Crew Check-In / Administrative Checks | 7 |
| 10. Scrutineering, Withdrawal or Restarting | 7 |
| 11. Service | 8 |
| 12. Practice, Testing | 9 |
| 13. Features of the Rally | 9 |
| 14. Sanction Exemption (s) | 10 |
| Appendix #1-Itinerary | 11 |
| Appendix #2-Maps | 12 |

1. Introduction

a. Location and Scoring

- Prescott Rally will be held in Northern Arizona, in the cities of Prescott and ChinoValley.
- Structured as 2 separate regional events (one per day), It is the 6th and 7th Round of the American Rally Association (ARA) Western Regional Championship and each day will award championship points separately.
- Friday will be scored as a California Rally Series (CRS) Coefficient 2 event and Saturday as a CRS Coefficient 3 rally.

b. Competition Regulations

- This event will be held under the current General Competition Rules, Rally Technical Rules, Rally Competition Rules, and Bulletins of the American Rally Association (ARA). The 2024 American Rally Association Rules and Regulations can be found at <https://www.americanrallyassociation.org/rulesandbulletins>.
- Modifications, amendments and / or changes to these Supplementary Regulations will be announced only by numbered and dated bulletins issued by either the Chairman, Clerk of the Course, or the Stewards.

c. Road Surface

- The course consists of mostly wide gravel or dirt roads, with several areas of embedded rock.

d. Itinerary Overview

- The two-day and two event competition itinerary includes 12 stages totaling 113 miles of stage roads and 315.6 miles of transit. The event runs on Friday and Saturday. Reconnaissance will begin at 8:00am-1800 on Thursday on Friday from 0700-1200.

2. Organization

a. Organizing Groups

- Prescott Rally is organized and conducted by Ringtail Rallysport, Inc.

b. Organizing Committee:

| | | |
|------------------------|-------------|--------------|
| Chairman | Riley Trout | 928-925-0837 |
| Clerk of the Course | Aj Hakala | 480-206-1334 |
| Volunteer Coordinator | Frank Goode | 480-220-4544 |
| Chief of Scrutineering | Kevin Mount | 714-403-9735 |

| | | |
|-----------------------------|--------------|--------------|
| Chief of Emergency Services | Eric Wight | 928-583-4312 |
| Chief of Communications | Don Sears | 928-277-7344 |
| Chief of Controls | Brent Ellzey | 928-273-2064 |
| Scoring | Marni Nagy | 949-436-2060 |
| Advance Cars | Keith Roper | 623-764-3924 |

c. ARA Officials:

| | | |
|---------------------------------|---|--|
| Competition Director | Preston Osborn | preston@ara-rally.com |
| Technical Director | Doug Nagy | Doug@ara-rally.com |
| Steward (s) | Alan Perry | |
| Series Press Contact | | ara@ara-rally.com |
| ARA Registrar/General Inquiries | Marni Nagy | ara@ara-rally.com |
| Rules, Membership, etc. | https://www.americanrallyassociation.org/ | |

d. Official Rally Hotel

- HQ is at the Days Inn in Chino Valley. The address is 688 Fletcher Court, Chino Valley AZ 86323. Phone number 928-458-7206. There is a room block under the Prescott Rally name.

e. Location of Rally Headquarters

| | |
|--------------------|--|
| Wednesday-Thursday | Days Inn Hotel Chino Valley, 86323 |
| Friday & Saturday | Chino Valley Equestrian Park @ Service location |

f. Parc Ferme' Location

Friday- Chino Valley Equestrian Park (Service) 2208 Equestrian Way

Saturday- Chino Valley Equestrian Park (Service) 2208 Equestrian Way

g. Official Notice Board

- The Official Notice Board is accessed with the Sportity App, which is available for both Apple and Android devices, or can be accessed on the web at <https://webapp.sportity.com/channel/Prescott2024>
- The password for the event is Prescott2024
- All official documents, Bulletins, start orders, provisional results, inquiries, and responses will use the Sportity App/Website

3. Schedule

Note: All times are in Mountain Standard Time. Arizona does not observe Daylight Saving Time. During September, we are the same as California time.

| Monday, August 19th | | |
|--|---|--|
| 10:00 | Event Early Entry Open until 9/1 23:59 | www.EnterRally.com |
| Sunday September 1st | | |
| 23:59 | End of Early Entry/ Opening of Late Entry | www.EnterRally.com |
| Sunday September 15th | | |
| 23:59 | Event Entry Closed | www.EnterRally.com |
| Monday September 16th | | |
| 19:00 | Novice Briefing | ARA Virtual Novice Briefing |
| 21:00 | Publication of provisional start order and Final Entry List | Sportity |

| Thursday September 19th | | |
|--------------------------------|--|-----------------------|
| 07:00-13:00 | Crew and Competitor Check-in/ Administrative Checks: Distribution of reconnaissance materials including individual access codes for RS Lite application | Days Inn Meeting Room |
| 08:00-13:00 | Volunteer & Media Check-In | Days Inn Meeting Room |
| 08:00-18:00 | Start of Recce | Stages |
| 18:00-21:00 | Scrutineering (By Appointment) | Days Inn Parking Lot |

| | | |
|-------------|--|-----------------------|
| 18:00-21:00 | Crew and Competitor Check-in/ Administrative Checks: Distribution of reconnaissance materials including individual access codes for RS Lite application | Days Inn Meeting Room |
| 20:00-21:00 | Volunteer & Media Check In | By Appointment |
| 21:00 | Stewards Meeting | Days Inn Meeting Room |
| 21:30 | Publication of Final Start Order | Sportity |

| Friday September 20th | | |
|------------------------------|--|---|
| 06:00-11:00 | Crew and Competitor Check-in/ Administrative Checks: Distribution of reconnaissance materials including individual access codes for RS Lite application | Findlay Subaru Blue Tent 3230 Willow Creek Rd, Prescott, AZ 86305 |
| 07:00-12:00 | Start of Recce | Stages |
| 08:00-12:00 | Volunteer & Media Check-in | Findlay Subaru, Green Tent 3230 Willow Creek Rd, Prescott, AZ 86305 |
| 08:00-12:00 | Scrutineering (By Appointment) | Findlay Subaru Service Bay 3230 Willow Creek Rd, Prescott, AZ 86305 |
| 8:30 | Service area opens for move-in: Chino Valley Equestrian Park (enter from Rodeo Road) | 2208 Equestrian Way Chino Valley, Arizona 86323 |
| 13:30-15:00 | Parc Expose | Findlay Subaru |
| 14:30 | MANDATORY Competitor Briefing (Max 15 Minutes) | Findlay Subaru |
| 15:00 | First Car Starts Day 1/ Leg 1 | Findlay Subaru |
| 17:44 | Service 30 Minutes + Regrouping | Chino Valley Equestrian Park |
| 21:24 | First Car Finishes Day 1/ Leg 1 | Chino Valley Equestrian Park |
| | Parc Ferme | Chino Valley Equestrian Park <u>Drivers will be directed to park</u> |
| ~22:00 | Provisional Scores Posted | Sportity |
| ~22:30 | Publication of Start Order for Day 2 | Sportity |
| 22:30 | Stewards Meeting | |

| Saturday September 21st | | |
|-------------------------|-------------------------------|---|
| 8:00 | First Car Starts Day 2/ Leg 1 | Chino Valley Equestrian Park |
| 18:52 | First Car Finishes Day 2 | Chino Valley Equestrian Park |
| | Parc Ferme | Chino Valley Equestrian Park <u>Drivers will be directed to park</u> |
| ~20:00 | Provisional Scores Posted | Sportity |
| ~20:30 | Podium Celebrations | Chino Valley Equestrian Park |

4. Entries

a. Entry Procedure

- Entry and payment must be paid via credit card online at www.EnterRally.com - ARA will send an email to ARA license holders announcing the opening of online entries. You may contact ARA@ara-rally.com for issues with the online entry system.
- All rally participants including competitors, crew members, media, and event officials, must first have an ARA License obtained from www.rallylicense.com
- Team media must register separately as Media
- We encourage you to bring an additional person or two to volunteer to work the event. All must register.

b. Number of Entrants Accepted

- A maximum of 30 cars will start the event.
- A wait list will be used if needed, with priority based on the receipt date of full payment.
- We reserve the right to increase this maximum.
- We reserve the right to cancel the event if no more than 20 entries are received by 9/15/2024 at 23:59. In the event of the cancellation of the event, all entries that have been paid in full, will be refunded in full.

c. Dates and Fees

| Entry Fees and Add Ons | Regular* | Late* |
|---------------------------------|-------------|--------|
| Regional Championship Entry Fee | \$975 | \$1275 |
| Rental Rallysafe Wiring Kit ** | \$40 | |

*Early and Late Dates are in the Schedule

** See Section 10.8

- Entry fee includes one Route Book, Stage Notes, Service Location, and one Service Crew packet.

- Competitors may revise or withdraw their entry prior to the closing date by completing an entry update/withdrawal form available in the Registrar Folder on the Sportity App. Once entries close, withdrawals and entry revisions are actioned by filing an inquiry.
- Withdrawn entries will be refunded in accordance with ARA GCR 4.9, as follows:
- Entrants may revise or withdraw their entry prior to the closing date by completing the Entry Update/ Withdrawal form available on the Sportity app in the Registrar folder. Withdrawal policy and refunds per ARA GCR Section 4.9.

Refunds Policy:

Withdrawal before September 1st, 2024 at 23:59: Full

Withdrawal after September 1st 23:59 until 15th 23:59 Entry fee less \$500

No refunds will be made after entry closes.

Withdrawing during the event can be actioned by completing the online NCE/RAR/Withdraw form that will be in the Sportity inquiry folder. Any questions regarding NCE (non-competitive entry) and RAR (restart after retirement) should be directed to the CRO.

- Entry fees will not be refunded for any competitor/team that is required to attend the Novice Briefing, fails to attend, and then wants to start the rally.

5. Insurance

- Third party liability insurance effective during the competition will be provided by a policy secured by USAC and will be displayed on the Official Notice Board.

6. Event Sponsor Advertising

- The event MAY use the event sponsor advertising space allowed by the current ARA rules. All ARA series advertising must be properly displayed on competition cars.

7. Fuel

- Competitors are required to supply/purchase their own fuel and must be in compliance with the ARA fuel requirements noted in the ARA Regulation 2.2.8
- Pump fuel is available 24 hours per day in the town of Chino Valley, Prescott and along transit routes.

a. **Refueling**

- a) Competitors may refuel in the fuel depots or at local gas stations when on transits.
- b) The refueling area will be adjacent to the service area, after the competitor departs the service out/ regrouping control. Transit time includes refueling time.
- c) Fueling must be performed on tarps when in the Fuel Depots.
- d) When refueling, there must be a member of the crew present with a fire extinguisher

- e) Fuel containers brought to the Fuel Depot must be tagged with the Car Numbers allowed to use the container. It is the responsibility of the Service Crews to retrieve their fuel containers.
- If cars need to be refueled between Friday and Saturday, they may be refueled at the fuel depot or at local gas stations.

8. Reconnaissance

- Recce is optional and competitors are encouraged to take advantage of it but it is not required. Competitors not wishing to participate in the recce session will still receive the stage notes as prepared by the organizer.
- a. **Recce Tracking**
 - Competitors must use the RS Lite smartphone application developed by Status Awareness System (SAS) during their reconnaissance. It is the competitor's responsibility to have a smartphone with the latest version of the app installed. The RS Lite app must be running at all times a competitor is on the stage. Reference ARA Bulletin 2024-4. *Individual access codes will be distributed at check-in.*
- b. **Recce Check-in**
 - Prior to Recce, Driver and Codriver MUST check-in at Competitor Check-In to receive their recce materials.
- c. **Recce Materials**
 - Vehicle identification sticker *-must be affixed to the upper right corner of the recce vehicle windshield and plainly visible.*
RSLite access codes
- d. **Vehicle and Occupants**
 - Vehicles used for Recce must be normal street vehicles with no lettering or advertising which would call undue attention to the vehicle; exhausts must be quiet. No prepared rally cars will be allowed. The Clerk of the Course, or his designate, shall be the sole arbiter of the suitability of all recce vehicles.
 - b) Each participating vehicle must contain the driver and co-driver of record for the entry. Additional passengers are allowed only if they are a registered driver or co-driver at this event.
- e. **Recce Route**
 - Open reconnaissance will be available on Thursday and Friday per the Schedule.
 - All stages are being run in both directions, please be cautious of oncoming traffic. During recce you may encounter oncoming traffic, off-highway vehicles (OHV, UTV, SXS), livestock (moo), local residents, road graders, and our stage crews. Please take appropriate caution while driving – there are many corners and crests on the narrow stage roads where visibility is very limited. All of the above were encountered during course pre-check. .
 - Speed limits are 35 mph on stages, this will be monitored with the ARA RS Lite recce tracking system per ARA Bulletin 2024-4.

- Be sure to observe quiet zones and speed limits stated in the routebook. Failure to do so, could result in penalties per RCR 1.2.1.

9. Competitor and Crew Check-In / Administrative Checks

- Entry documentation for competitors and crew is checked online before the event. Teams with open items on their registration will be contacted by the Event Registrar the week of the rally. Open issues will need to be resolved at check-in if not done so beforehand
- All team members attending the event must be designated by the team's key contact by September 15th, 2024.
- Designate in the Registrar folder in Sportity. They will be required to list the name, email and phone number for all competitions and crew on their team.

a. Crew and Competitor Check in Location Details

Thursday September 19th

Days Inn Meeting Room
688 Fletcher Street Chino Valley, AZ 86323
Time: 7:00-13:00 & 18:00-21:00

Friday September 20th

Findlay Subaru Dealership
3230 Willow Creek Road Prescott, AZ 86305
Time: 6:00-11:00
Blue Tent

b. Items Distributed at Check in

Route Book
Stage Notes
Event and Sponsor Decals
Service Packet
RS Lite Application access code for Recce
Wrist bands (See below)

All materials (excluding wrist bands) can be received by any member of any team, crew or competitor, during any check-in period.

10. Scrutineering

- Only credentialed ARA officials, Prescott Rally Officials, and competitor car presenters are allowed in the scrutineering area.

- Scrutineering will be held at the location listed in the Schedule; see the Appendices for maps.
- a. Scrutineering Appointments**
- Email the Chief of Scrutineering (Kevin Mount) to make an appointment for scrutineering kn6nze@gmail.com at your earliest convenience. If no appointment time is confirmed by 9/15/2024 an appointment time will be assigned to the team.
- b. Logbooks**
- All competitors must present a Vehicle Log Book for the entered vehicle. Log Books will not be issued at the event without prior arrangement. If you need a Log Book, contact Doug@ara-rally.com at least 7 days before the event.
- c. Safety Equipment**
- Driver's safety equipment and competition vehicles must comply with the current ARA Rally Technical Rules available at www.americanrallyassociation.org/rulesandbulletins and must be presented with the vehicle at the time of scrutineering.
- d. Rallysafe**
- This event will use RallySafe in accordance with ARA Bulletin 2024-3. Rental wiring kits can be purchased during the registration process for \$40. RallySafe wiring kits must be installed and ready for inspection prior to presenting the vehicle for scrutineering. RallySafe units will be distributed at scrutineering.
- e. Event Decals and Vinyl**
- Per RCR 9.3.1 all event required stickers and identification are to be on the competition vehicle prior to scrutineering. ARA number packages should be purchased in advance online at Rally.Build or are available during event entry. ID materials and event sponsor decals must be applied to the satisfaction of the Scrutineer. Teams will not pass scrutineering without all such items properly installed on the vehicle.
 - If this is your first ARA event, decals will automatically be provided to you. You can track the status of your free kit with the link in the Registrar folder on Sportity. To purchase spares or replacements go to Rally.Build
- f. Shovels**
- **IMPORTANT Additional Scrutineering Requirement:** all vehicles must carry a metal blade shovel for spill cleanup and forest fires. Fire danger is extremely high.
- g. Withdrawing or Restarting**
- All Competitors who are withdrawing from the competition are required to complete and submit an ARA Rally Withdrawal Slip, which is a page at the back of the routebook. **The preferred withdrawal method is to submit an inquiry (via Sportity) by entering the same text as in the slip.** Alternatively, you can submit the filled-in paper form to Scoring, the Clerk of the Course, a Time Control, or Sweep Team.
 - Competitors who have missed one or more controls and are rejoining under other circumstances are required to complete and submit an ARA Rally Re-Entry Slip, which is a page at the back of the routebook. The Chief Scrutineer or his designee will verify that the vehicle and team meets the safety requirements and that any required tracking or monitoring device is functioning properly before issuing a time

card for the Rally Re-Entry. **The preferred method is to submit an inquiry (via Sportity) by entering the same text as in the slip.** Alternatively you can submit the filled-in paper form to the Chief Scrutineer.

11. Service Park

a. Friday & Saturday

Chino Valley Equestrian Park
2208 Equestrian Way, Chino Valley, AZ 86323
GPS: 34.783488, -112.417798

Access Time: 8:30am Friday, Crews can begin moving in. There will be open access all weekend to the service park.

b. Size

- Each entry will be allocated a 20' x 40' service space. If more room than the standard space is needed, contact the Chief of Service, **Paul Willemsen 949-945-4895** at least 7 days prior to the event.

c. Service Vehicles and Trailers

- Each entry will have room for one Service Vehicle; No trailers are allowed in service unless used for servicing. If the team must service from their trailer you must coordinate with the Chief of Service at least 7 days prior to the event.

d. Assigned Location

- If you need to be located next to another competitor, contact the Chief of Service before September 15th.

e. Trailer Drop

- Trailer Drop location #1 is at the parking lot of the Days Inn in Chino Valley. Trailers can be dropped at the service park on Friday if they are being used for service. *Once service map is ready, we will designate assigned areas)*

f. Additional Service Info

- Servicing areas must be left as found. Spills must be cleaned up with oil dry and trash picked up.
- Infraction of event rules and/or Arizona law by Service Crews will cause assessment of penalties to their team. **Don't speed or break any laws.**
- Service crews must notify the Chief of Service if they leave the service area to retrieve a broken car.

12. Practice, Testing

- There will not be a Practice Stage nor a Press Stage.
- Practice or testing of any nature on any public road is forbidden within a 100-mile radius of Prescott Rally Stages for a period of 120 days prior to and 30 days following Prescott Rally.
 - a) All practice or testing must be approved in writing by the Clerk of the Course and the Chairman, or their designate. Additionally, written permission from the property owner, or permits from the governing agency, must be obtained and presented to the Clerk of the Course and Chairman with the request to practice.

- b) Teams found in violation will be barred from starting or excluded from finishing Prescott Rally and their entry fees will not be refunded. The Clerk of the Course shall be the sole arbiter of any potential violation. Participation in an event press / practice stage (if any) and/or event reconnaissance during their scheduled times is not considered a violation.

13. Features of the Rally

- Monitor Sportity and/or your team email address for bulletins and the latest information.
 - Rallysafe and the RSLite Smartphone application will be used during the event.
- a. Parc Expose**
- Both Driver and/or Co-Driver must attend the Friday Parc Expose with their competition vehicle. Parc Expose will be at the Findlay Subaru Dealership.
 - See Schedule for arrival time and location.
 - Start of the event will be from the Findlay Subaru Dealership, so be sure to bring your gear.
- b. Start of the Rally**
- Start Order will be published per the schedule on Friday morning, and Friday evening for the following day's competition.
 - Starting order will be published on Sportity
- c. Running the Rally**
- Official time is GPS time as displayed by RallySafe in the Mountain Standard Time Zone GMT or UTC -7
 - Note MTC controls at the end of a leg allow competitors to arrive early per RCR 5.3.14.
 - MTC 4A-Friday
 - MTC-8A-Saturday
 - All control operations will be conducted per section 4 of the current ARA Rally Competition Rules and employ RallySafe consoles and tablets. Stage starts will be counted down by the RallySafe console and monitored by the start marshal regarding jump starts.
 - This event will be scored using RallySafe but will also use traditional timecards and timing methods
 - Officials will be identified by their credential card displayed on a lanyard.
 - Wave In: to help minimize the gap between cars, control workers may "wave you in" before your arrival minute at an ATC, per RCR 4.1.7.
- d. Finish and Impound**
- Vehicles will be impounded at Friday and Saturday Finish until released by officials.
 - Any inspections and/or teardowns of any competing vehicles following the competition will be at the sole discretion of the Chief Scrutineer and ARA Steward. Those selected will be given directions to the location.
- e. Results**
- Informational, Provisional, and Final scores will be posted on the Sportity app/website.

14. Sanction Exemption (s)

RCR Exemption #1

The distance between service on Friday will be greater than 90 miles

RCR Exemption #2

Cars will run at 2 minute intervals

Appendix # 1

Itinerary Day 1 Friday

| TOTALS OF THE RALLY | | | | | | | | | | |
|------------------------------------|--------------|--------------|--------------|--|--|--|--|--|--|------------|
| | SS | TRANSIT | TOTAL | | | | | | | % |
| Friday Regional (Sections 1,2) | 38.5 | 140.9 | 179.4 | | | | | | | 21% |
| Saturday Regional (Sections 1,2,3) | 75.1 | 174.6 | 249.8 | | | | | | | 30% |
| Total -- 12 SS | 113.6 | 315.6 | 429.2 | | | | | | | 26% |

| START Friday Regional | | | | | FRIDAY September 20, 2024 | | | | |
|-------------------------------|--|--------------|---------------|---------------|---------------------------|---------------|--------------|-------------|---------------|
| TC | LOCATION | SS DIST | TRANSIT DIST | TOTAL DIST | CONTROL | LATENESS TIME | TRANSIT TIME | TARGET TIME | FIRST CAR DUE |
| 0 | MTC OUT (Findlay Subaru Prescott) | | | | | | | | 15:00 |
| | distance to next refuel | (19.26) | (65.22) | (84.48) | | | | | |
| 1 | | | 32.50 | 32.50 | | | 1:05 | 1:05 | 16:05 |
| SS 1 | First View N 1 | 11.58 | | | 0:03 | 0:16 | | | 16:08 |
| 2 | | | 1.53 | 13.11 | | | 0:09 | 0:25 | 16:33 |
| SS 2 | Witty Tom N 1 | 7.68 | | | 0:03 | 0:10 | | | 16:36 |
| 2A | Service IN | | 31.19 | 38.87 | | | 0:58 | 1:08 | 17:44 |
| | Service A (Chino Valley Equestrian Cen | (19.26) | (65.22) | (84.48) | | | | | |
| 2B | Service OUT - REGROUPING IN | | | | | | 0:30 | | 18:14 |
| 2C | Regroup OUT | | | | | | 0:08 | | 18:22 |
| RZ | REFUEL (5 min extra included in transit to SS3) | | | | | | | | |
| 1 | distance to next refuel | (19.26) | (75.69) | (94.95) | | | | | |
| 3 | | | 31.19 | 31.19 | | | 0:58 | 0:58 | 19:20 |
| SS 3 | Witty Tom S 1 | 7.68 | | | 0:03 | 0:10 | | | 19:23 |
| 4 | | | 1.53 | 9.21 | | | 0:09 | 0:19 | 19:42 |
| SS 4 | First View S 1 | 11.58 | | | 0:03 | 0:16 | | | 19:45 |
| 4A | MTC IN (Chino Valley Equestrian Center) | | 42.97 | 54.55 | | | 1:23 | 1:39 | 21:24 |
| | Parc Ferme | | | | | | | | |
| Friday Regional Totals | | 38.52 | 140.91 | 179.43 | | | | | |

Section 1
Section 2

Appendix # 1

Itinerary Day 2 Saturday

| START Saturday Regional | | | | | SATURDAY September 21, 2024 | | | | |
|---|--|--------------|--------------|------------|-----------------------------|---------------|--------------|-------------|---------------|
| TC | LOCATION | SS DIST | TRANSIT DIST | TOTAL DIST | CONTROL | LATENESS TIME | TRANSIT TIME | TARGET TIME | FIRST CAR DUE |
| MTC OUT (Chino Valley Equestrian Center) | | | | | | | | | 8:00 |
| | distance to next refuel | (18.78) | (43.66) | (62.44) | | | | | |
| 1 | | | 31.19 | 31.19 | | | 0:58 | 0:58 | 8:58 |
| SS 1 | Witty Tom S 2 | 7.68 | | | 0:03 | 0:10 | | | 9:01 |
| 2 | | | 1.30 | 8.98 | | | 0:11 | 0:21 | 9:22 |
| SS 2 | Perkinsville W 1 | 11.10 | | | 0:03 | 0:12 | | | 9:25 |
| 2A | Service IN | | 11.17 | 22.27 | | | 0:30 | 0:42 | 10:07 |
| Service A (Chino Valley Equestrian Cent | | | | | | | | | |
| | (18.78) | (43.66) | (62.44) | | | | | | |
| 2B | Service OUT - REGROUPING IN | | | | | | 0:30 | | 10:37 |
| 2C | Regroup OUT | | | | | | 0:08 | | 10:45 |
| RZ | REFUEL (5 min extra included in transit to SS3) | | | | | | | | |
| 2 | distance to next refuel | (18.78) | (43.66) | (62.44) | | | | | |
| 3 | | | 31.19 | 31.19 | | | 0:58 | 0:58 | 11:43 |
| SS 3 | Witty Tom S 3 | 7.68 | | | 0:03 | 0:10 | | | 11:46 |
| 4 | | | 1.30 | 8.98 | | | 0:11 | 0:21 | 12:07 |
| SS 4 | Perkinsville W 2 | 11.10 | | | 0:03 | 0:12 | | | 12:10 |
| 4A | SERVICE IN | | 11.17 | 22.27 | | | 0:30 | 0:42 | 12:52 |
| Service B (Chino Valley Equestrian Cent | | | | | | | | | |
| | (18.78) | (43.66) | (62.44) | | | | | | |
| 4B | Service OUT - REGROUPING IN | | | | | | 1:00 | | 13:52 |
| 4C | Regroup OUT | | | | | | 0:08 | | 14:00 |
| RZ | REFUEL (5 min extra included in transit to SS5) | | | | | | | | |
| 3 | distance to next refuel | (18.78) | (43.66) | (62.44) | | | | | |
| 5 | | | 11.17 | 11.17 | | | 0:30 | 0:30 | 14:30 |
| SS 5 | Perkinsville E 1 | 11.10 | | | 0:03 | 0:12 | | | 14:33 |
| 6 | | | 1.30 | 12.4 | | | 0:11 | 0:23 | 14:56 |
| SS 6 | Witty Tom N 2 | 7.68 | | | 0:03 | 0:10 | | | 14:59 |
| 6A | SERVICE IN | | 31.19 | 38.87 | | | 0:58 | 1:08 | 16:07 |
| Service C (Chino Valley Equestrian Cent | | | | | | | | | |
| | (18.78) | (43.66) | (62.44) | | | | | | |
| 6B | Service OUT - REGROUPING IN | | | | | | 0:30 | | 16:37 |
| 6C | Regroup OUT | | | | | | 0:08 | | 16:45 |
| RZ | REFUEL (5 min extra included in transit to SS5) | | | | | | | | |
| 4 | distance to next refuel | (18.78) | (43.66) | (62.44) | | | | | |
| 7 | | | 11.17 | 11.17 | | | 0:30 | 0:30 | 17:15 |
| SS 7 | Perkinsville E 2 | 11.10 | | | 0:03 | 0:12 | | | 17:18 |
| 8 | | | 1.30 | 12.4 | | | 0:11 | 0:23 | 17:41 |
| SS 8 | Witty Tom N 3 | 7.68 | | | 0:03 | 0:10 | | | 17:44 |
| 8A | MTC IN (Chino Valley Equestrian Center) | | 31.19 | 38.87 | | | 0:58 | 1:08 | 18:52 |

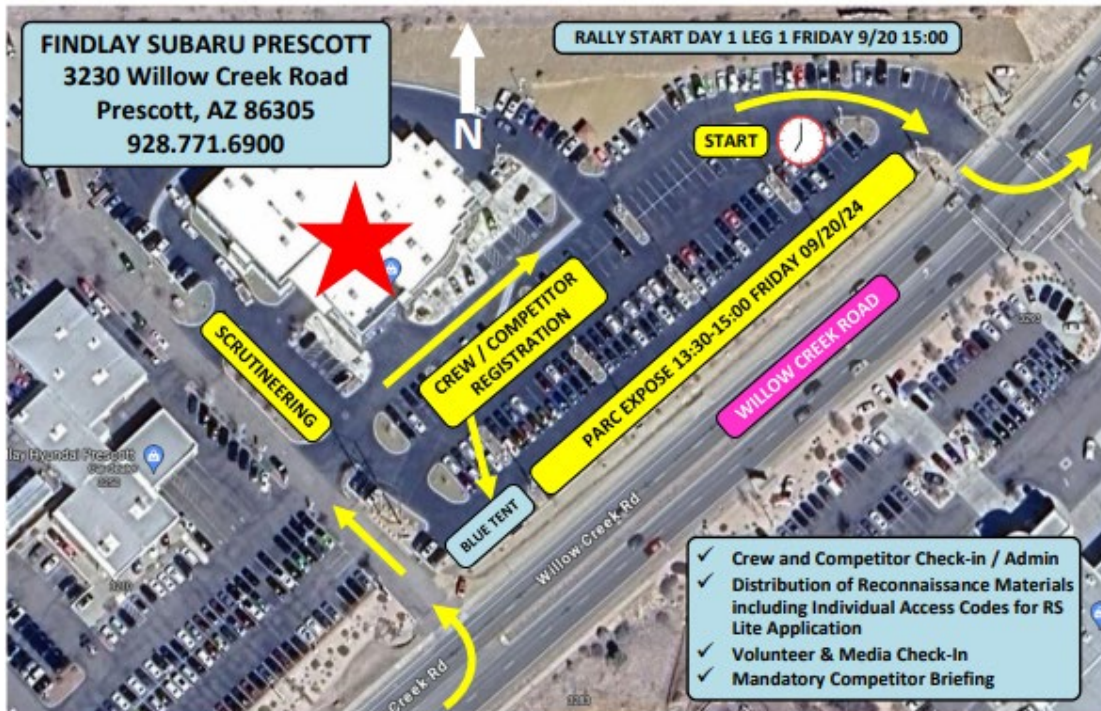
Parc Ferme

| | | | |
|---------------------------------|-------|--------|--------|
| Saturday Regional Totals | 75.12 | 174.64 | 249.76 |
|---------------------------------|-------|--------|--------|

Appendix #2 Maps

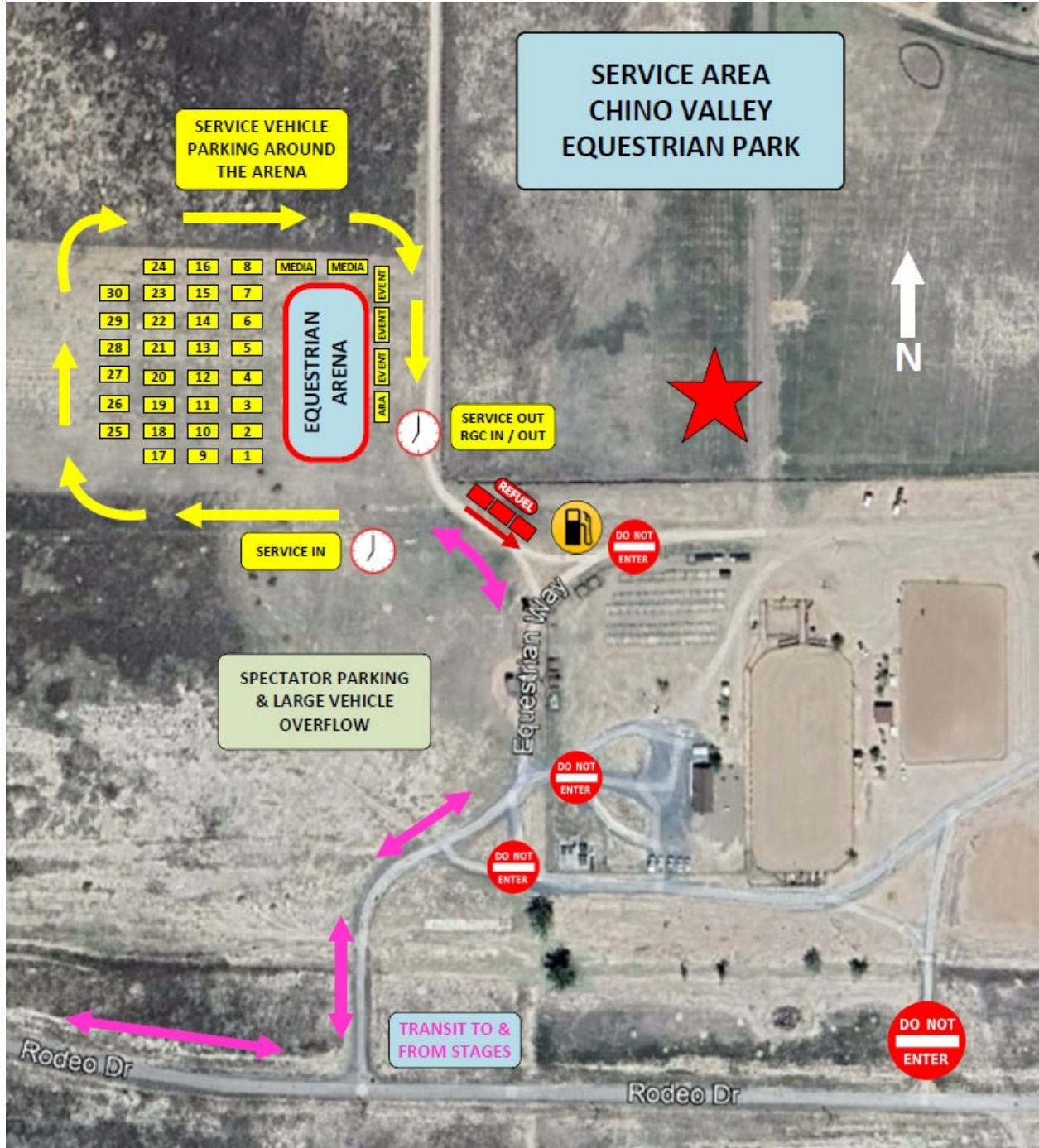


2024 PRESCOTT RALLY HEADQUARTERS – CHECK-IN & ADMIN (THURSDAY 9/19)



2024 PRESCOTT RALLY – FINDLAY SUBARU CHECK-IN & ADMIN (FRIDAY 9/20)

Service Area Map



Friday & Saturday Stage Overview

